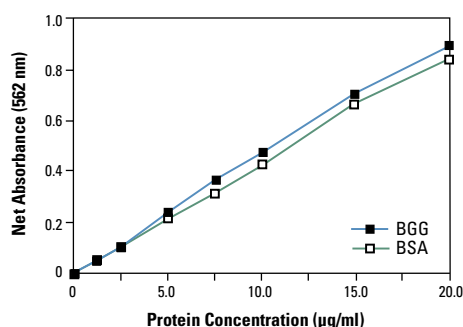


Protein Purification

Protein quantitation - Assay kits, general



Colour response curves for the Thermo Scientific Pierce albumin standard (BSA, PN23209) and bovine gamma globulin standard (BGG, PN23212) assayed with the Thermo Scientific Pierce micro BCA protein assay.

Micro BCA protein assay, Thermo Scientific Pierce

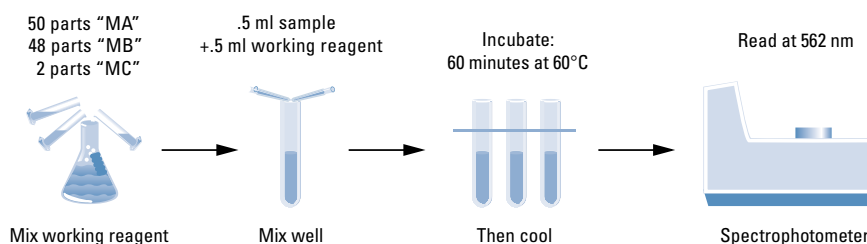
Thermo
SCIENTIFIC

NEW

PN

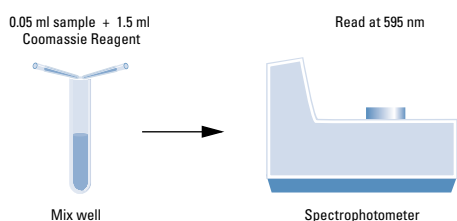
The Thermo Scientific Pierce Micro BCA protein assay measures dilute protein solutions from 0.5µg/mL to 20µg/mL.

- Working reagent is stable for 24 hours
- Colorimetric method; read at 562nm
- Compatible with most ionic and nonionic detergents
- A very sensitive reagent for dilute protein samples
- Linear working range for BSA: 0.5µg/mL to 20µg/mL
- Less protein:protein variation than dye-binding methods
- All kit reagents stable at room temperature for 2 years
- Convenient microplate or cuvette format

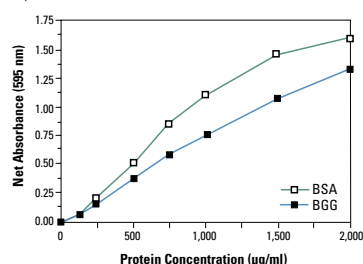


Procedure summary for the Thermo Scientific Pierce micro BCA protein assay.

Catalogue No	Description
PN23235	Micro BCA protein assay kit Sufficient reagents to perform 480 standard tube assays or 3,200 microplate assays. Includes: Micro reagent A (MA), 240mL Micro reagent B (MB), 240mL Micro reagent C (MC), 12mL Albumin standard (2mg/mL), 10 x 1mL ampoules
PN23231	Micro BCA reagent A (MA), 240mL
PN23232	Micro BCA reagent B (MB), 240mL
PN23234	Micro BCA reagent C (MC), 12mL



Procedure summary for the Thermo Scientific Pierce Coomassie Plus (Bradford) protein assay.



Thermo Scientific Pierce colour response curves for the Thermo Scientific Pierce albumin standard (BSA, PN23209) and bovine gamma globulin standard (BGG, PN23212) assayed with the Thermo Scientific Pierce Coomassie Plus protein assay.

Coomassie Plus (Bradford) protein assay, Thermo Scientific Pierce

Thermo
SCIENTIFIC

NEW

PN

As fast as the original coomassie assay, with increased accuracy - the high-performance Bradford reagent.

- Detects protein concentrations from 100µg/mL to 1,500µg/mL
- Fast (almost immediate) colour development read at 595nm
- Compatible with reducing sugars, reducing substances and thiols
- Refrigerated reagent is stable for up to 2 years
- Superior linear response over the range of 125µg/mL to 1,500µg/mL
- Convenient microplate or cuvette format
- Micro protocol useful for protein concentrations from 1µg/mL to 25µg/mL

The Thermo Scientific Pierce Coomassie plus assay reagent is ready to use. Simply add the reagent to the equal volumes of samples and standards, mix and then measure the absorbance at 595nm. The Pierce™ Coomassie Plus assay reagent formulation provides increased linearity of response and only half the expected protein:protein variation of other commercial Bradford assay formulations.

Catalogue No	Description
PN23236	Coomassie Plus (Bradford) assay kit Sufficient reagents to perform 630 standard assays or 3,160 microplate assays. Includes: Coomassie Plus - (Bradford) Assay reagent, 950mL Albumin standard (2mg/mL), 10 x 1mL ampoules
PN23238	Coomassie Plus (Bradford) assay reagent, 300mL Sufficient reagent to perform 200 standard assays or 1,000 microplate assays. Albumin standard not included
PN23239	Coomassie Plus Compat-Able protein assay kit
PN23209	Albumin standard ampoules, 2mg/mL Contains bovine albumin in 0.9% NaCl solution containing sodium azide
PN23212	Bovine gamma globulin standard ampoules, 2mg/mL Contains bovine gamma globulin fraction II in 0.9% NaCl solution containing sodium azide